



TOWNSHIP OFFICIALS OF ILLINOIS RISK MANAGEMENT ASSOCIATION

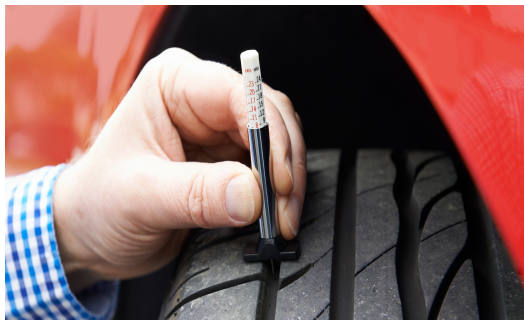
RISK REMINDER

Truck Safety Inspection

By law, certain vehicles are required to obtain a Safety Certificate annually or semi-annually before they can be operated on Illinois highways. Here are some steps that can be taken to prepare for safety testing in Illinois:

- Documentation:** Gather current vehicle registration and insurance documents along with any previous inspection reports.
- Cleanliness:** Clean your truck inside and out. A well-maintained appearance reflects positively during inspections.
- Visual Inspection:** Address any visible issues such as broken lights, cracked windshields, or damaged mirrors.
- Brakes and Tires:** Make sure the brake pads, rotors, and drums are in good condition. Verify tires have sufficient tread and are properly inflated.
- Lights and Signals:** Check all headlights, taillights, turn signals, and brake lights. Replace any burnt-out bulbs or malfunctioning lights.
- Horn and Mirrors:** Ensure the horn is working properly and adjust mirrors for optimal visibility.
- Safety Equipment:** Verify safety equipment such as fire extinguishers, warning triangles, and first aid kits are present and functional.
- Fluid Levels:** Check fluid levels, including oil, coolant, and windshield washer fluid. Top off any low levels.
- Schedule Inspection:** Contact an official Illinois testing station to schedule your inspection.

idot.illinois.gov/transportation-system/transportation-safety/vehicle-inspections



TOIRMA VEHICLE IDENTIFICATION CARD

Liability coverage for this vehicle has been provided by TOIRMA through the cooperative contracts provision of the Illinois Constitution, Revised 1970. This is a self-funded pool sponsored by the Township Officials of Illinois.

Vehicles owned by Federal, State or Local Governmental Agencies are exempt from the requirements of mandatory insurance per 625 ILCS 5/7-601 (b)(4).

For additional information or in case of an accident, contact:

Claim Reporting Hotline: (844) 562-2720 | Available 24/7
or toirma.org/claims-management



For more information, contact TOIRMA at (888) 562-7861

CLAIM REPORTING HOTLINE (844) 562-2720 | Available 24/7