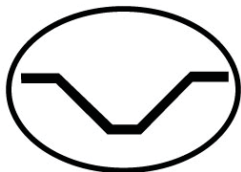




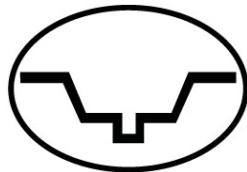
# RISK REMINDER

## Excavation and Trench Safety

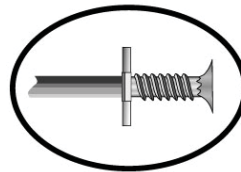
1. **Protective Systems:** Use sloping, benching, shoring, and trench boxes.



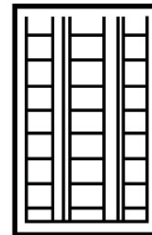
Sloping



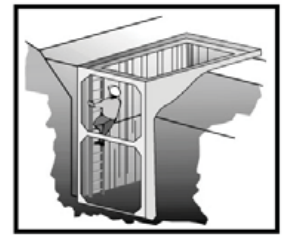
Benching



Shoring



Shoring



Trench Boxes

2. **Prevent Collapses:** Support trench sides and store materials safely.



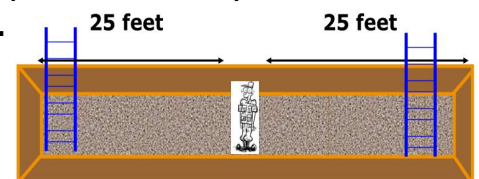
3. **Barriers:** Install around excavations; keep vehicles out or use stop-blocks.

4. **Underground Services:** Mark and avoid; use spades or shovels, not picks and forks.

5. **Flood Prevention:** Have pumping equipment ready if necessary.

### Key Points:

- Excavations or trenches 5' deep or greater require a protective system.
- An exit ladder must be located within 25' of workers.
- Never enter an unprotected excavation or trench.



For more information, contact TOIRMA at (888) 562-7861

CLAIM REPORTING HOTLINE (844) 562-2720 | Available 24/7