

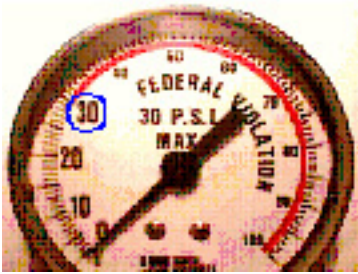


PARTNERING WITH TOWNSHIPS

TOWNSHIP OFFICIALS OF ILLINOIS RISK MANAGEMENT ASSOCIATION

RISK REMINDER

Compressed Air Hazards



If used for cleaning purposes,
must be maintained less than 30 psi:
29 CFR 1910.242(b)



BOTH of these
guns can
KILL!



NEVER

Look into the "business" end
Point it toward any part of the
body; Yours or others

12psi of air can "pop" an
eyeball from its socket

At 4 inches, 40psi can
rupture and eardrum,
cause brain hemorrhage,
or possible death.

Less than 80psi of air, striking a
small wound on the hand has
been known to inflate the arm
"to the size of a grapefruit"
due to air bubbles in the
bloodstream

4psi of air can
rupture a bowel

4psi of air in the mouth can rupture
the lungs and intestine

Air can enter the navel through
a layer of clothing, inflating and
rupturing the intestines

Other Facts:

- A hurricane wind can drive a straw endwise into a tree or wooden telephone pole
- A 70-mile-per-hour wind exerts a pressure of only one-tenth of a pound per square inch (0.1psi)
- A wind of 120-miles-per-hour has a pressure of only 0.25psi

Hammer, Willie; Occupational Safety Management and Engineering; Third Edition; Prentice-Hall International, Englewood, NJ; 1985

For more information, contact your Loss Control Consultant at (888) 562-7861

CLAIM REPORTING HOTLINE (844) 562-2720 | Available 24/7